

# machined collection



NB: colours are depicted as accurately as printing process allows. **All quotes, samples, enquiries and sales are made subject to our standard conditions published in detail at [www.tilemob.com.au/conditions](http://www.tilemob.com.au/conditions). E.&O.E.**

For further information, contact our commercial division on **PH (07) 3355 5055** or e-mail: [sales@tilemob.com.au](mailto:sales@tilemob.com.au)

The Tile Mob Pty Ltd ABN 95 069 987 524

► tiles ► stone ► mosaics ► slate ► terracotta

[www.tilemob.com.au](http://www.tilemob.com.au)



# ruggine matt machined



150x600mm  
NC217487

300x600mm  
NC217488

600x600mm  
NC217489  
Made in Italy

NB: colours are depicted as accurately as printing process allows. **All quotes, samples, enquiries and sales are made subject to our standard conditions published in detail at [www.tilemob.com.au/conditions](http://www.tilemob.com.au/conditions). E.&O.E.**

For further information, contact our commercial division on **PH (07) 3355 5055** or e-mail: [sales@tilemob.com.au](mailto:sales@tilemob.com.au)

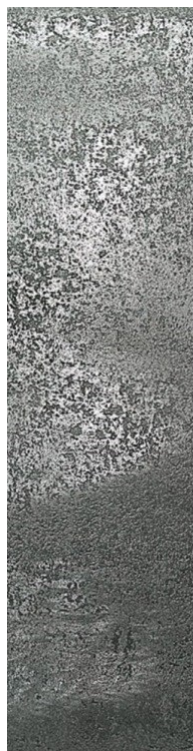
The Tile Mob Pty Ltd ABN 95 069 987 524

► tiles ► stone ► mosaics ► slate ► terracotta

[www.tilemob.com.au](http://www.tilemob.com.au)



# platino matt machined



150x600mm  
NC217490

300x600mm  
NC217491

600x600mm  
NC217492  
Made in Italy

NB: colours are depicted as accurately as printing process allows. **All quotes, samples, enquiries and sales are made subject to our standard conditions published in detail at [www.tilemob.com.au/conditions](http://www.tilemob.com.au/conditions). E.&O.E.**

For further information, contact our commercial division on **PH (07) 3355 5055** or e-mail: [sales@tilemob.com.au](mailto:sales@tilemob.com.au)

The Tile Mob Pty Ltd ABN 95 069 987 524

► tiles ► stone ► mosaics ► slate ► terracotta

[www.tilemob.com.au](http://www.tilemob.com.au)



# ferra matt machined



150x600mm  
NC217493

300x600mm  
NC217494

600x600mm  
NC217495  
Made in Italy

NB: colours are depicted as accurately as printing process allows. **All quotes, samples, enquiries and sales are made subject to our standard conditions published in detail at [www.tilemob.com.au/conditions](http://www.tilemob.com.au/conditions). E.&O.E.**

For further information, contact our commercial division on **PH (07) 3355 5055** or e-mail: [sales@tilemob.com.au](mailto:sales@tilemob.com.au)

The Tile Mob Pty Ltd ABN 95 069 987 524

► tiles ► stone ► mosaics ► slate ► terracotta

[www.tilemob.com.au](http://www.tilemob.com.au)