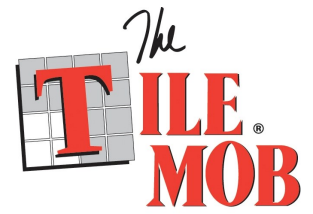


dimensions series



An exciting new range of **decorative tiles** has just landed at The Tile Mob Mitchelton. At 750mm long, these borders are ideal for the modern kitchen splash back. The use of wall tile features however is now not just limited to traditional bathroom and kitchen spaces — they can also be used as feature walls in lounge rooms, dining rooms and entryways. They are a very popular choice being easy to maintain and they provide a surface that is strong and resilient to heat and cold.

This collection of features tiles merges function with aesthetics to deliver undeniable style. Kitchen splash-backs, bathroom walls and shower interiors can be transformed with this collection of wall tiles. Not forgetting the range of stunning mosaics, stark whites, bold colours we have on display in contemporary or traditional styles.

Start browsing below for inspiration!

Visit our Brisbane Tile Showroom or contact us at sales@tilemob.com.au or Ph (07) 3355 5055 for more information.



silver granada



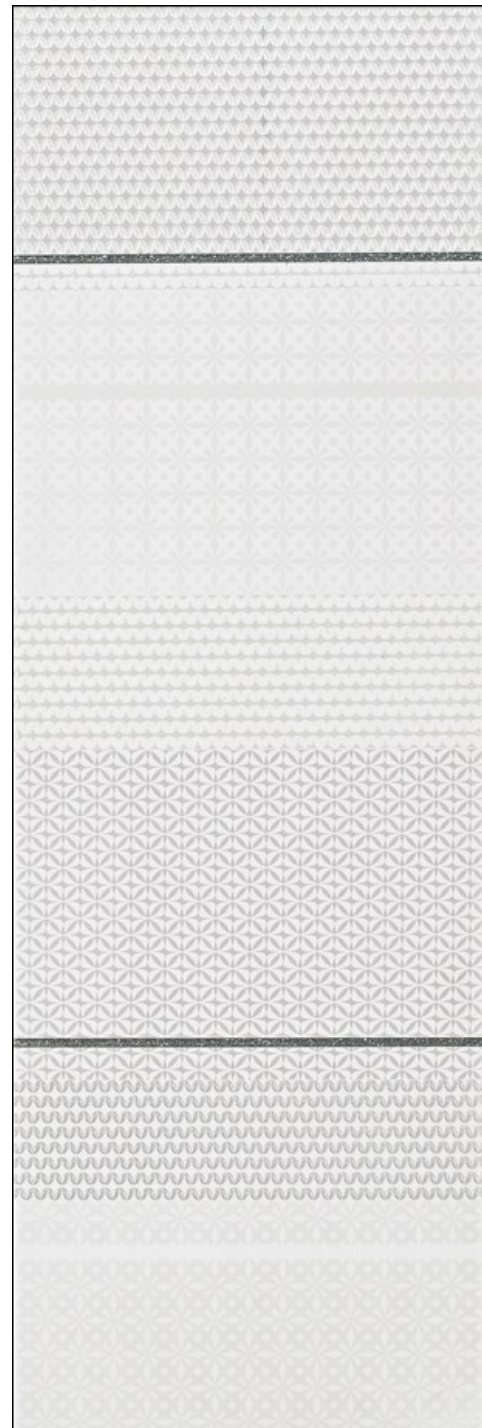
NC223221
250x750mm
SILVER GRANADA



silver prima donna



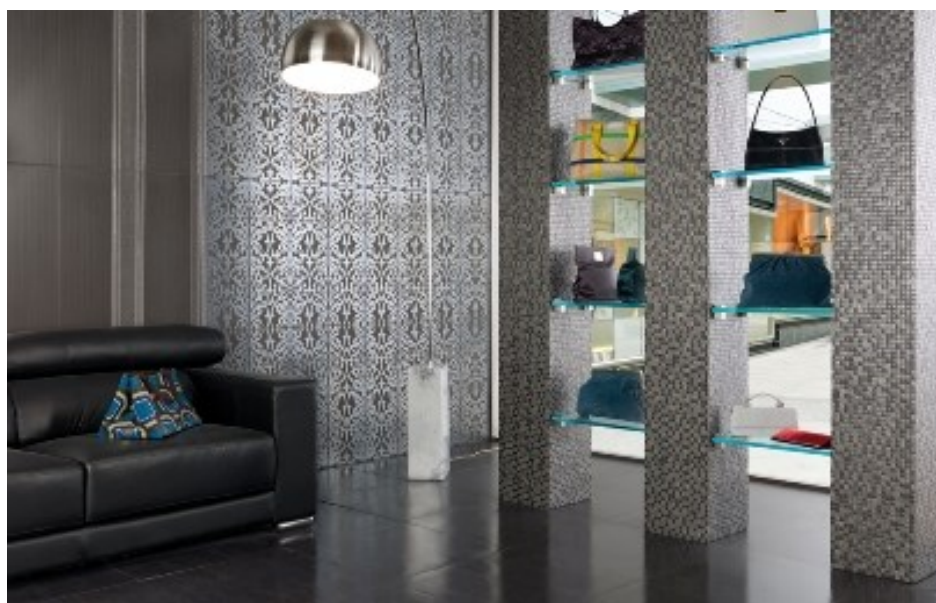
NC223222
250x750mm
SILVER PRIMA DONNA



black damask



NC223227
250x750mm
BLACK DAMASK



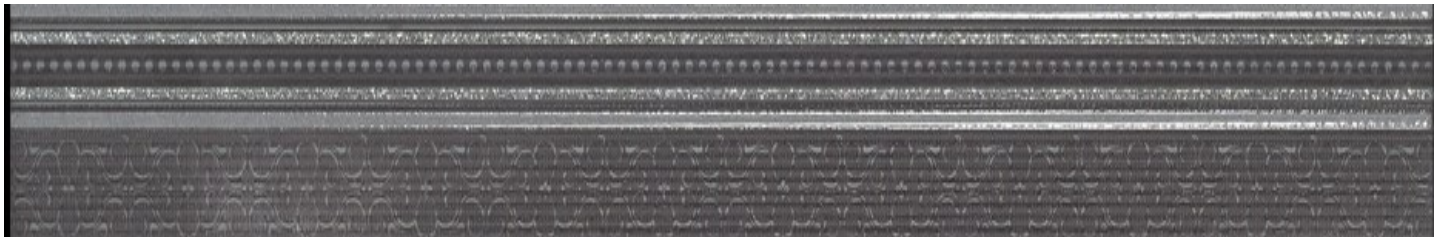
black damask listello



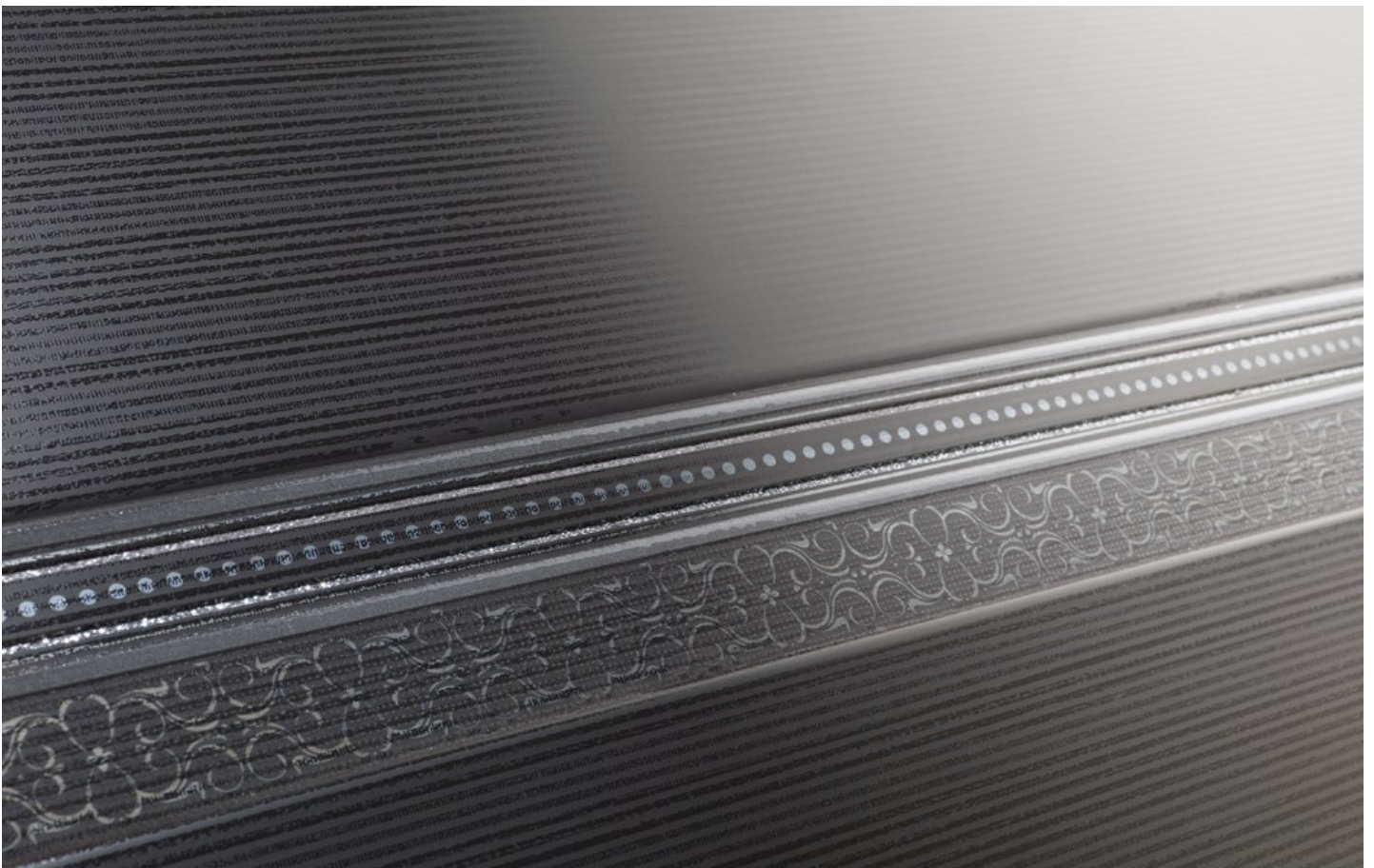
NC223228

80x750mm

BLACK DAMASK LISTELLO



**80x750mm BLACK DAMASK LISTELLO
WITH 250x750mm BLACK LINEAR BODY TILE NC223237**



beige tone abstract



BEIGE TONE ABSTRACT

250x750mm

NC222708



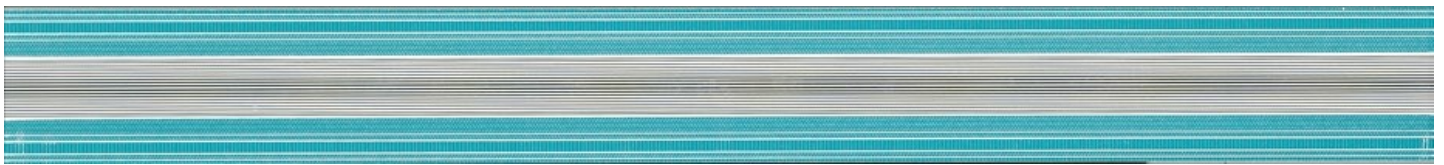
aqua tapestry



NC223225
250x750mm
AQUA TAPESTRY



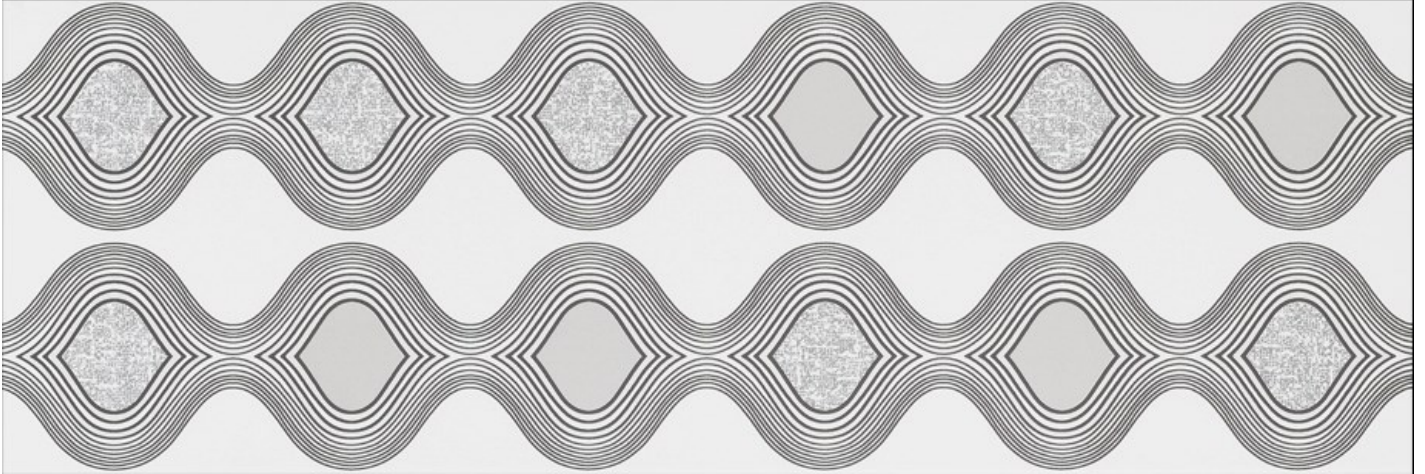
NC223226
80x750mm
AQUA TAPESTRY LISTELLO



palatino aztec



NC223223
PALATINO AZTEC



NC223826
PALATINO LISTELLO AZTEC



golden fabrix



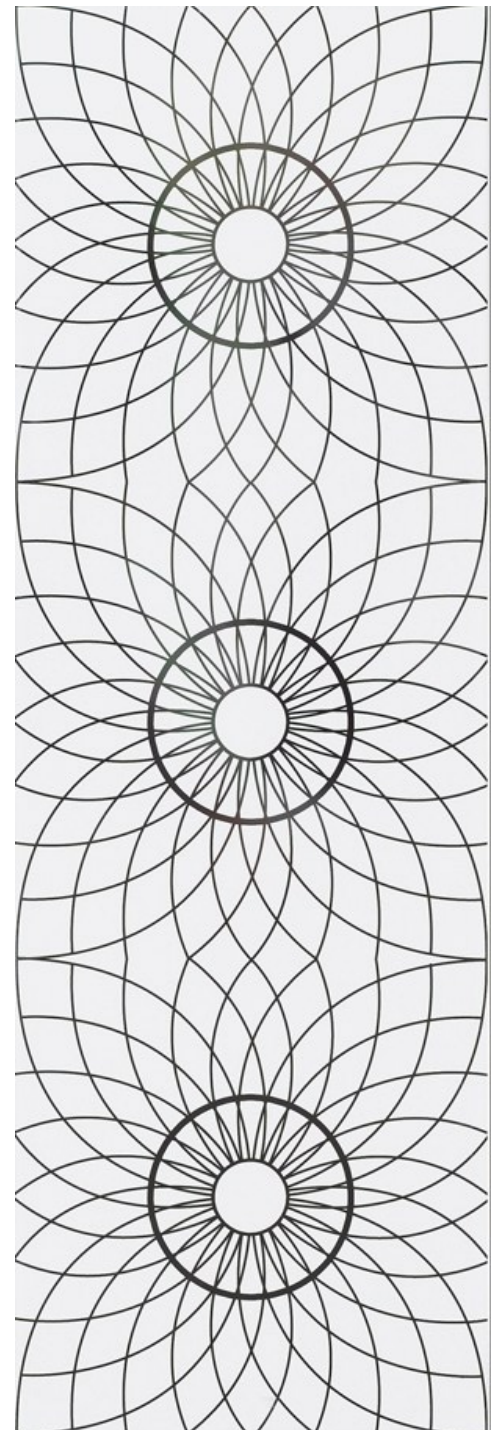
NC223229
250x750mm
GOLDEN FABRIX



silver concentric



NC223224
250x750mm
SILVER CONCENTRIC



metallic listello



NC223241
20x750mm
SILVER LISTELLO



NC223240
20x750mm
GOLD LISTELLO



NB: colours are depicted as accurately as printing process allows. **All quotes, samples, enquiries and sales are made subject to our standard conditions published in detail at www.tilemob.com.au/conditions. E.&O.E.**

For further information, contact our commercial division on **PH (07) 3355 5055** or e-mail: sales@tilemob.com.au

The Tile Mob Pty Ltd ABN 95 069 987 524

► **tiles** ► **stone** ► **mosaics** ► **slate** ► **terracotta**

www.tilemob.com.au